

Regional Animal Services Pathway Planning



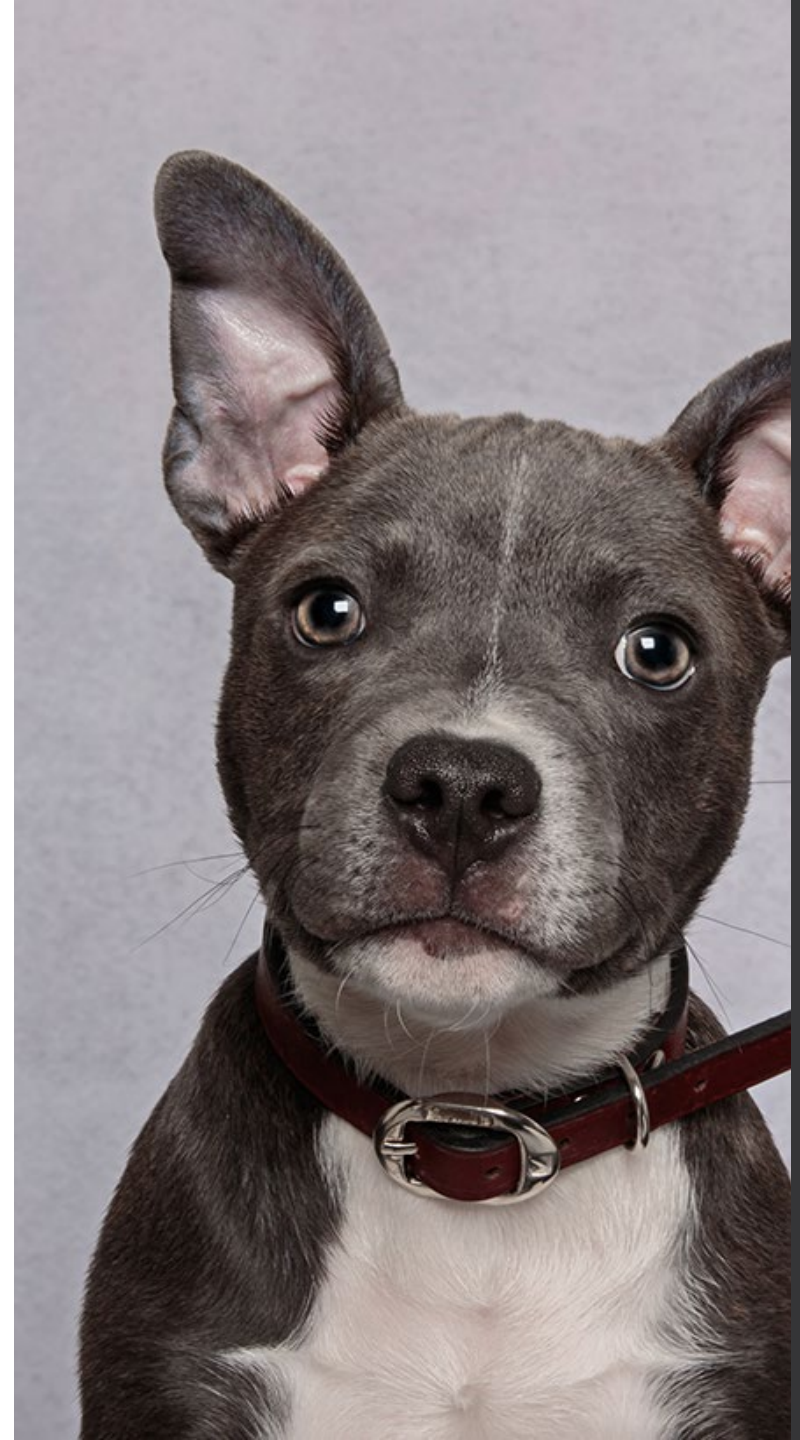
Shelter Challenges

- Increased length of stay for animals in our care
- Decrease in animals transferred from WCRAS to Nevada Humane Society
- Capacity for care of animals at WCRAS



Process Changes

- Increased behavior training for Animal Care Staff.
- Performing behavioral assessments.
- Implementation of Pathway Guidelines.
- Weekly Pathway meeting to discuss outcomes for all animals at WCRAS.
- Increasing the number of transfer partners to include organizations outside of Washoe County.
- Creation of email that is sent to all rescues with interested adopters info.



Kelly Bollen, MS, CABBC

- Master's Degree in Animal Behavior
- Adjunct professor at the Cummings School of Veterinary Medicine
- Former Director of Behavior at Cornell University's College of Veterinary Medicine
- Teaches Shelter Behavior Management Certificate course through the University of Pacific
- 23 years experience in the field of Companion Animal Behavior.



Pathway Guidelines

- Day 1 - 5: Daily behavior walkthrough
- Day 5 - 6: Animals are assessed for behavior
 - Helps make appropriate matches with rescues.
 - Helps fast track animals into rescues.
- Day 7 - 10: At risk protocol is initiated.
 - Rescues are sent an email of all available animals
 - Animals with known owners that are still at shelter are called



Pathway Guidelines

- Day 10: Pre-Euthanasia list is sent to all rescues
- Day 10 – 13: Final Decisions are made
- Day 14: Euthanasia
 - Animals with severe behavior issues that are not safe for rescues are euthanized.
 - Depending on space and length of time, animals with no behavior issues are euthanized.

